



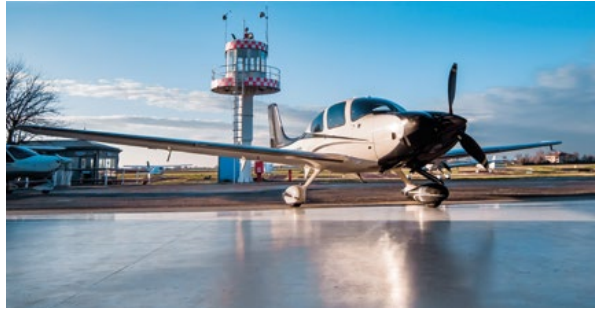
PROFESSIONAL
AVIATION **A C A D E M Y**

INTERNATIONAL FLIGHT ACADEMY



FLIGHT TRAINING SOLUTIONS
MADE IN ITALY





Professional Aviation strives to provide **safe** and effective flight training programs for enrolled students, maintaining the **highest professional standards in pilot training** based on a professional level of knowledge and skill.

Furthermore, Professional Aviation is dedicated to consistently **improving and elevating** their aviation training programs, to meet and exceed the international requirements set by the aviation industry.

We maintain all our programs updated to remain relevant and effective in preparing pilots for the demands of the industry.

2006 Founded Cirrus Service Center and EASA certified Cirrus Training Center

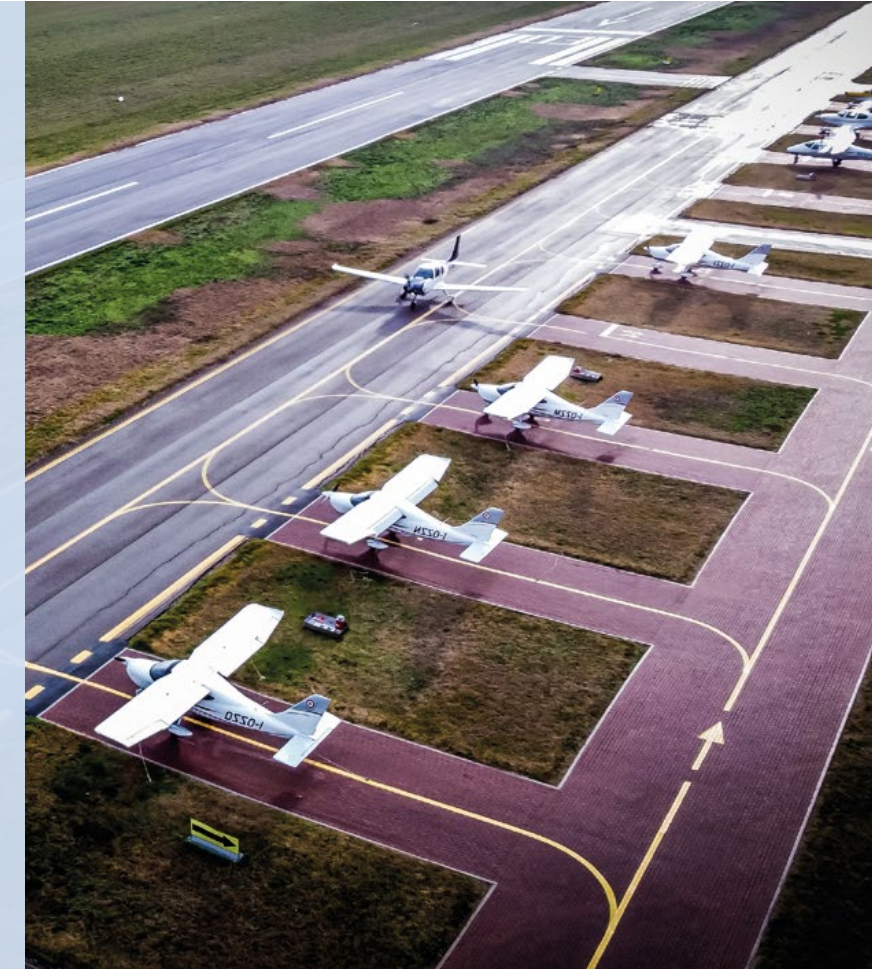
2009 Established new operation at Ozzano dell'Emilia

2011 Founded Professional Aviation

2017 Recognized as international flying academy with complete spectrum of end to end flight training solutions available

2024 Introduced Helicopter training

2024 Obtained GCAA full training certification



WE ARE COMMITTED TO DELIVERING TRAINING OF THE HIGHEST QUALITY, STANDARDIZED TO INDUSTRY BENCHMARKS, AND PRIORITIZING SAFETY WITHOUT COMPROMISE.

Vito Preti
CEO and Founder of Professional Aviation

**Fully owned 20 aircraft 100% glass cockpit fleet.
Exceeding 15.000 flying hours per year.
Continuous investment in cutting edge fleet to expand capacities.**

WHY PROFESSIONAL AVIATION?

- Maintenance
- Instructors
- Operations
- Safety
- Location



MAINTENANCE

Our in-house team of engineers and CAMO, approved by Cirrus Aircraft and Tecnam, is crucial for ensuring operational safety and efficiency.

The fleet is maintained to the highest standards, with immediate issue resolution to prevent pilot desensitization to faults.

Our on-site maintenance facility provides immediate support, creating a seamless connection with our crews similar to the airline industry.

INSTRUCTORS

Our top-tier instructor team is prepared to deliver the best training to our cadets.

Our standardized, full-time team consists of seasoned professional pilots with diverse experience and background, ranging from the airline industry to air force operations, including CSAR and HEMS.

OPERATIONS

A dedicated team of 8 meticulously plans and monitors student training, ensuring rapid progress in aviation careers.

Our advanced software tracks cadet progress, reducing the Ab Initio course duration from 24 to 18 months, accelerating career advancement, and enhancing efficiency and cost savings.

SAFETY

“Safety First” is ingrained in our students from day one by our dedicated safety educators. Students act as Safety Officers of the day in our SOR (School Operations Room), overseeing daily activities and reporting to the safety manager.

Continuous training and events reinforce these principles throughout the year.

LOCATION

The Academy’s location is ideal for training, offering diverse weather conditions, expansive northeast flatlands, and access to multiple minor airports that enhance VFR training.

Close proximity to major commercial airports (Bologna, Forlì, Rimini, Venice) facilitates real-world IFR practice.

Additionally, students enjoy exclusive access to a private airport with an average of 35 daily departures, ensuring uninterrupted training without delays from commercial traffic.



Our Flight training organization has been recognized and awarded by industry leaders such as Cirrus Aircraft.

TRAINING FLEET

We continuously improve and invest in our aircraft training fleet, using the best aircraft available for professional pilot training.

Our fully owned fleet, equipped with the latest technology and Glass Cockpit, is designed for high operational efficiency to optimize the training pathway costs and facilitate the seamless integration and career start for professional pilots.

Fleet overview:

Tecnam P2008 / P2006

Cirrus SR20 / SR22

CAP 10 B/K

ALSIM ALX (FSTD)

Guimbal Cabri G2

A cutting-edge fleet of aircraft, close to the world of airlines.



TRAINING SOLUTIONS

We provide standardized Ab Initio modular **ATPL training programs**, offering end-to-end training solutions tailored to meet the specific needs and completion timelines of our international partners.



TRAINING PROGRAMS

Modular EASA ATPL Frozen (A)
Modular GCAA ATPL Frozen (A)
Modular EASA CPL (H)

Tailored programs:

PPL (A-H) Private Pilot Licence
MEP (A) Multi-Engine Piston
IR (A) Instrument Rating
NR (A-H) Night Rating
CPL (A-H) Commercial Pilot Licence
HB (A-H) Hours Building
AUPRT(A) Advanced Upset Prevention and Recovery Training
FAA conversion to EASA

WELL ESTABLISHED INTERNATIONAL TRAINING ORGANIZATION

Over 17 years of providing flight training, Professional Aviation has established itself as a trusted and recognized partner in the global aviation community, prioritizing **safety and efficiency** by delivering customized end-to-end flight training solutions for both **aircraft and helicopters**.

Our academy has successfully trained professional pilots from all over the world and many of our cadets now serve in **major airlines worldwide**.



EASA IT.AT0.034
GCAA Certified
FAA Capable

WHAT WILL STUDENT LIFE BE LIKE

Our campus, strategically located **near the flight school**, enables students to concentrate on their studies and excel in their training program. We provide a comprehensive array of facilities and services tailored to meet each student's specific needs, including **accommodations**, catering, transportation, and a variety of student activities designed to foster both academic and personal growth.

Our dedicated student support team is committed to cultivating a **comfortable and welcoming environment** that enhances students' academic performance and personal development. Moreover, we collaborate with various partners to accommodate the diverse cultural and religious needs of our **international students**.

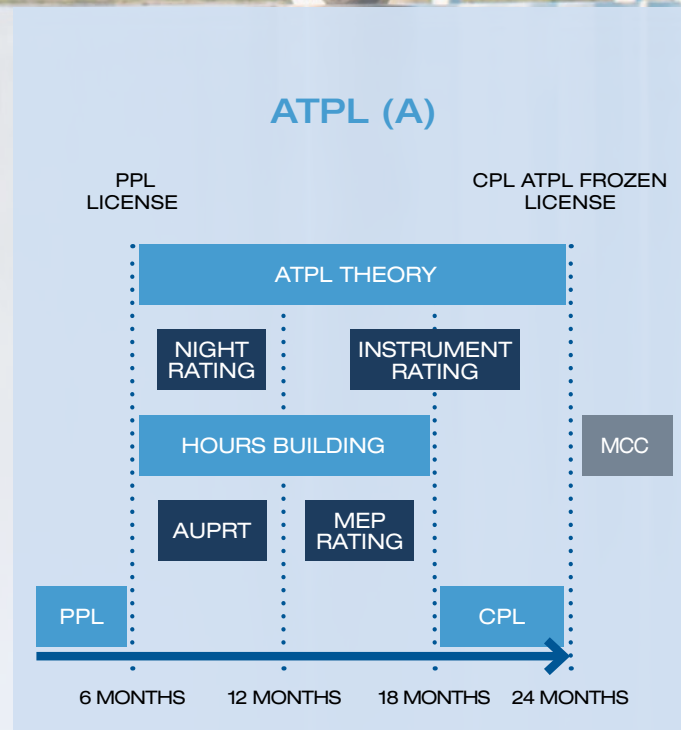


ATPL (A)

COURSE OUTLINE



- Private Pilot License - PPL (A)
- Airline Transport Pilot License Theory - ATPL (A) Frozen
Theoretical Module required for the CPL (A)
- Hours Building - HB
Module in which a PPL (A) pilot accumulates the required flight hours to qualify for the CPL (A)
- Night Rating
- AUPRT Advanced Upset Prevention and Recovery Training
- IR (A) Instrument Rating
- MEP (A) Multi-Engine Piston
- Commercial Pilot License - CPL (A)

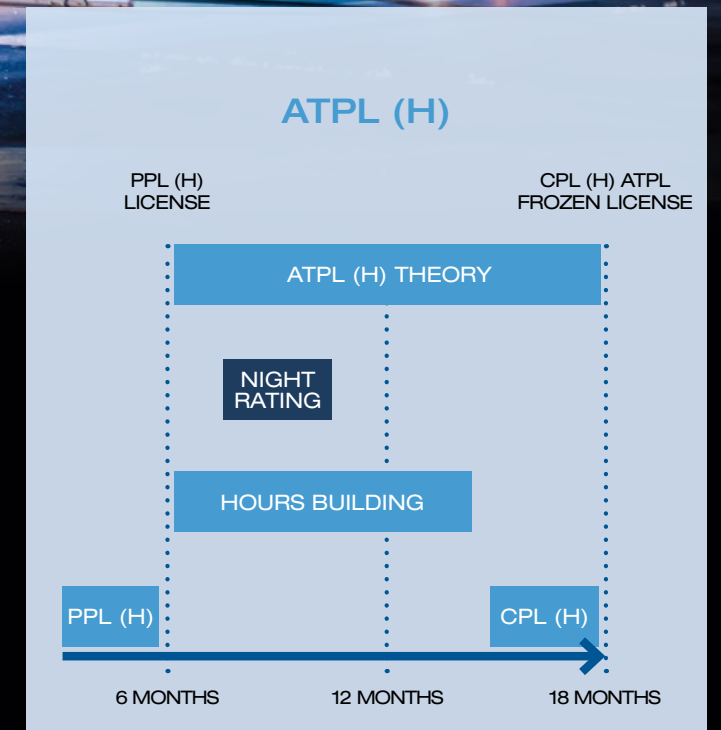


ATPL (H)

COURSE OUTLINE



- Private Helicopter Pilot License - PPL (H)
- Airline Transport Pilot License Theory - ATPL (H) Frozen
Theoretical Module required for the CPL (H)
- Hours Building - HB
Module in which a PPL (H) pilot accumulates the required flight hours to qualify for the CPL (H)
- Night Rating
- Commercial Helicopter Pilot License - CPL (H)



ON LINE SELECTION PROCESS

Our selection process is designed to evaluate candidates' technical expertise and aptitude accurately, aiming to identify the **best talent** that meets the rigorous demands of the **aviation industry**.

Our tests **comply to EASA.CAT.GEN.MPA.175 regulations, which govern the selection of aeronautical personnel in line with European directives.**

This commitment underscores our dedication to maintaining the highest standards of **quality and safety** in aviation training.



Mathematics

Physics

English

Cognitive Ability

ADAPT

Personality Questionnaire

“Flying has always been my dream. We humans are bipeds ‘stuck’ on Earth. Taking flight, gives you a great feeling of freedom and allows you to see what surrounds us from another perspective”

Maurizio Cheli - Astronaut



“At that moment I felt I had arrived where I belonged. The air was to me what earth means to other people”

Fabio Consoli - Italian Air Force Test Pilot and currently airline pilot on B777

As soon as I left the ground, I knew I myself had to fly”

Amelia Earhart - The first woman to fly nonstop and solo across the Atlantic Ocean



WHERE ARE WE

The flight school is located inside the airfield
“FlyOzzano” situated in Ozzano dell’Emilia (Bologna)
in via Sabbionara, 5



BY CAR

Arriving from the North:
Ring road, exit 13 San
Lazzaro di Savena,
heading towards
Ozzano dell’Emilia

Arriving from the South:
Highway A14 north,
exit Castel San Pietro
Terme, heading
towards Ozzano
dell’Emilia



BY PLANE

Coordinates:
N44° 28,5' E011° 32,5'
Runway orientation:
03/21 on asphalt
runway Ozzano Radio:
128,45



Tel. +39 051 795009
academy@professionalaviation.it
www.professionalaviation.it/en/

